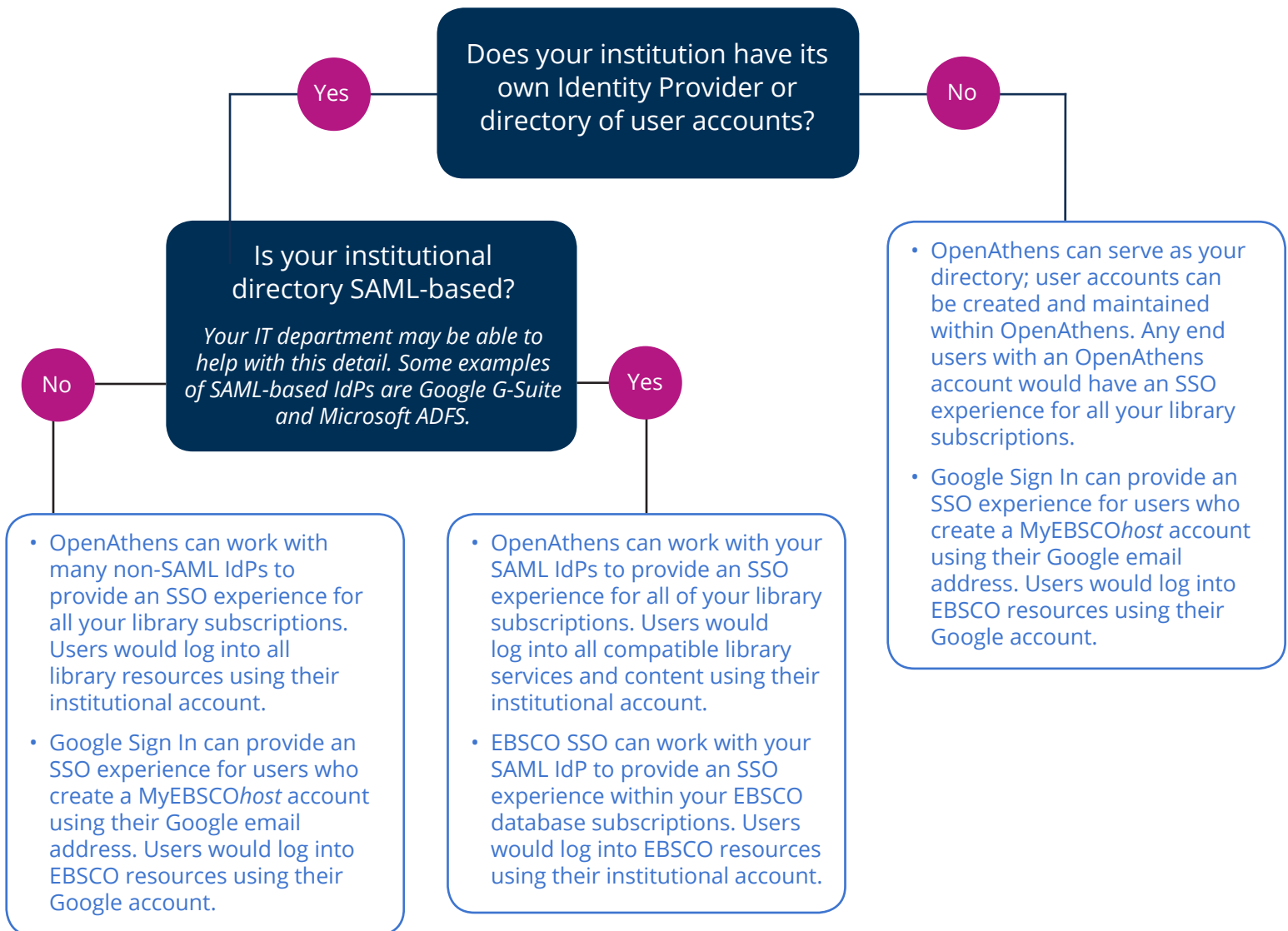


# Want to move toward a single sign-on user experience?

EBSCO offers a number of solutions to make authentication easier and more personalized for your end users. The decision tree below will help point you to the solution that works for your library.

See also: [What is single sign-on, how can it benefit my end users, and how can I set it up?](#)



## What's next?

- [Click here](#) for more information on EBSCO's three SSO offerings, including additional benefits to the library, expanded descriptions of the user experience, and technical requirements.
- Contact your EBSCO Sales team to schedule a demo or to speak with EBSCO's authentication experts, who will be able to help you determine which option will best suit your library's needs.